



# Scraper Hollow Site 2 Supplemental Watershed Plan & Environmental Document

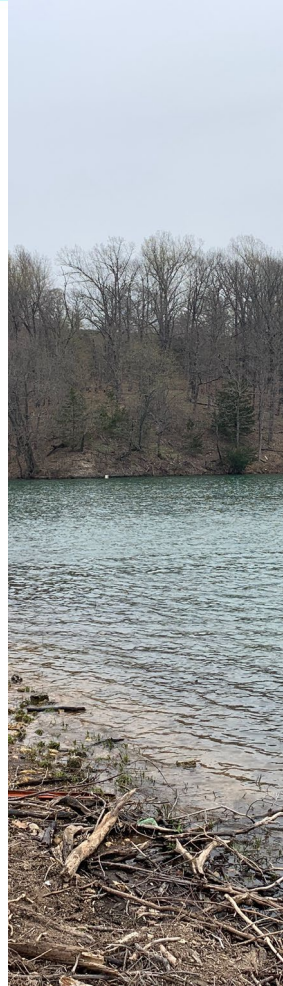
Adair County | Dam Structure #2

Natural  
Resources  
Conservation  
Service

[nrcs.usda.gov](https://nrcs.usda.gov)

# Introductions & Roles

Name	Agency	Role
Andrew Inman	Adair Co. Cons. Dist.	Board of Directors
Ashley Teehee-Mann	Adair Co. Cons. Dist.	District Program Coordinator
Michael Ramming	USDA-NRCS	District Conservationist
Valerie Glasgow	USDA-NRCS	Planning Engineer
Roderick Dukes	USDA-NRCS	Asst. State Conservatist
Tammy Sawatzky	OK Cons. Comm.	Conservation Program Div. Director
Colin Young	Ad Astra	Project Manager
Triveece Penelton	Ad Astra	Public Engagement
Laurie Brown	Ad Astra	Environmental Lead



Natural Resources Conservation Service

[nrcs.usda.gov](http://nrcs.usda.gov)

# Today's Meeting

- **What's Happening**
  - Project purpose
  - Planning process
  - Existing conditions
- **Your Input Is Important**
  - Potential project impacts and benefits
  - Other comments
- **How to Comment**
  - Written and verbal
  - Project website (under development)
- **Schedule and Project Contacts**



# Purpose of the Project

- **Complete a Supplemental Watershed Plan and Environmental Document**
- **National Environmental Policy Act (NEPA)**
  - Passed in 1969, Established Requirements that Federal Agencies Must:
    - Analyze the Environmental (Social, Economic, and Natural) Impacts of Federal Actions
    - Engage the Public in the Decision-making Process



Natural  
Resources  
Conservation  
Service

[nrcs.usda.gov](https://nrcs.usda.gov)

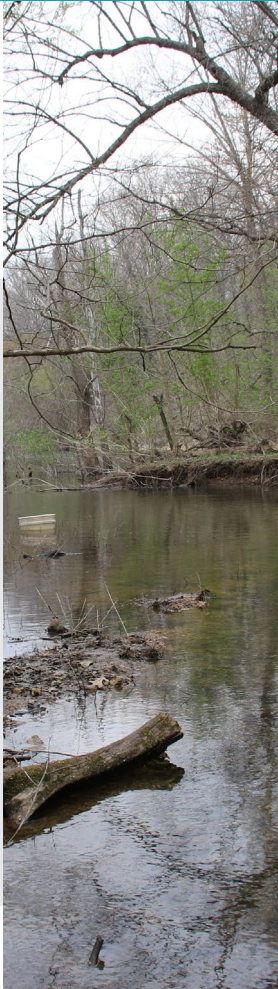
# Elements of the NEPA Process

- Identify the Purpose of and Need for Action
- Identify Environmental Issues Associated with the Proposal
- Formulate Alternatives that Meet the Purpose and Need
- Analyze the Environmental Impacts of the Alternatives
- Document this Analysis
- Make and Document the Decision



# Resource Concerns

- Air Quality
- Fish & Wildlife Habitats
- Threatened & Endangered Species
- Migratory Birds & Eagles
- Invasive Species
- Riparian Areas
- Natural Areas
- Recreation
- Socioeconomic
- Hazardous Waste
- Historic & Cultural
- Land Use
- Environmental Justice
- Public Health and Safety
- Local & Regional Economy
- Scenic Beauty
- Soils
- Erosion & Sedimentation
- Prime & Unique Farmland
- Surface Water Quality
- Surface Water Quantity
- Water Supply
- Wetlands
- Floodplain Management

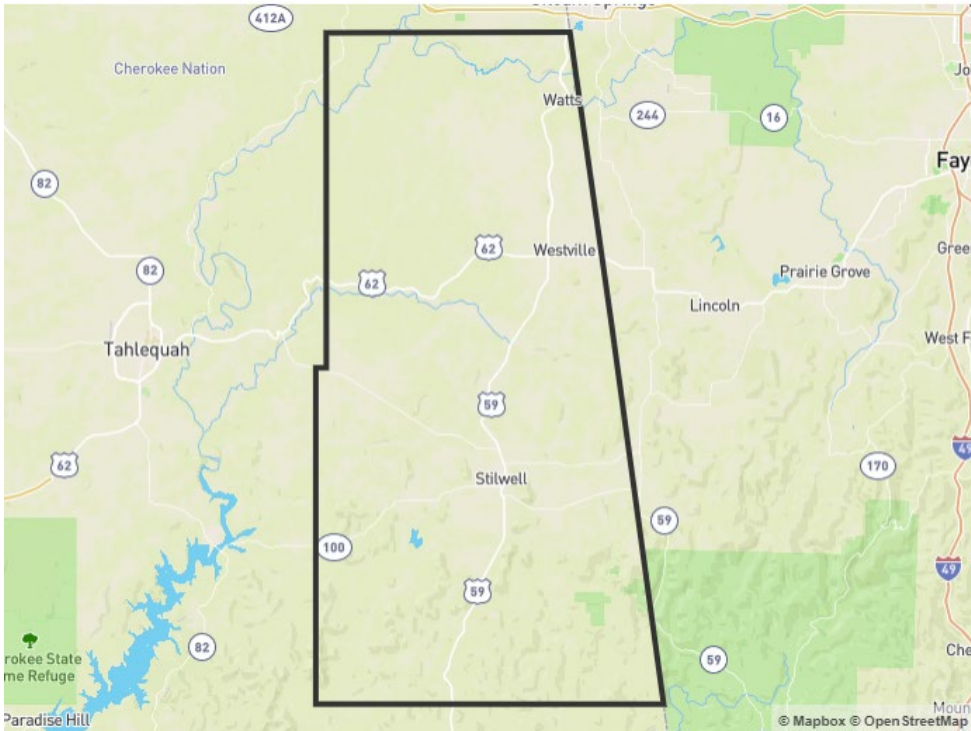


Natural  
Resources  
Conservation  
Service

[nrcs.usda.gov](http://nrcs.usda.gov)

# Project Area

## Area of Interest



□ Adair County, OK



### Total Population

**19,839**  
People

Adair County, OK

**3,676**  
People

Stilwell, OK



### Males

**50%**  
of total population

Adair County, OK

**47%**  
of total population  
Stilwell, OK



### Females

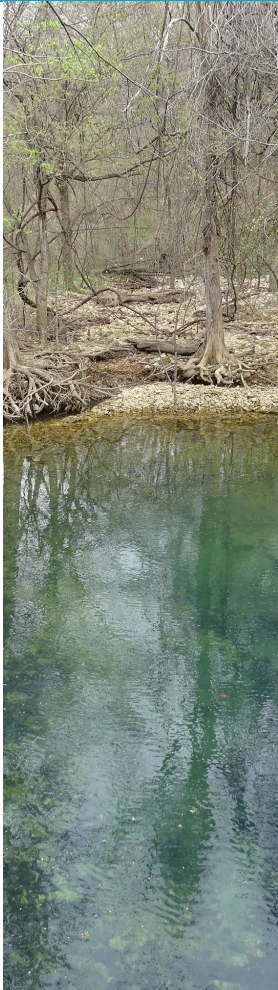
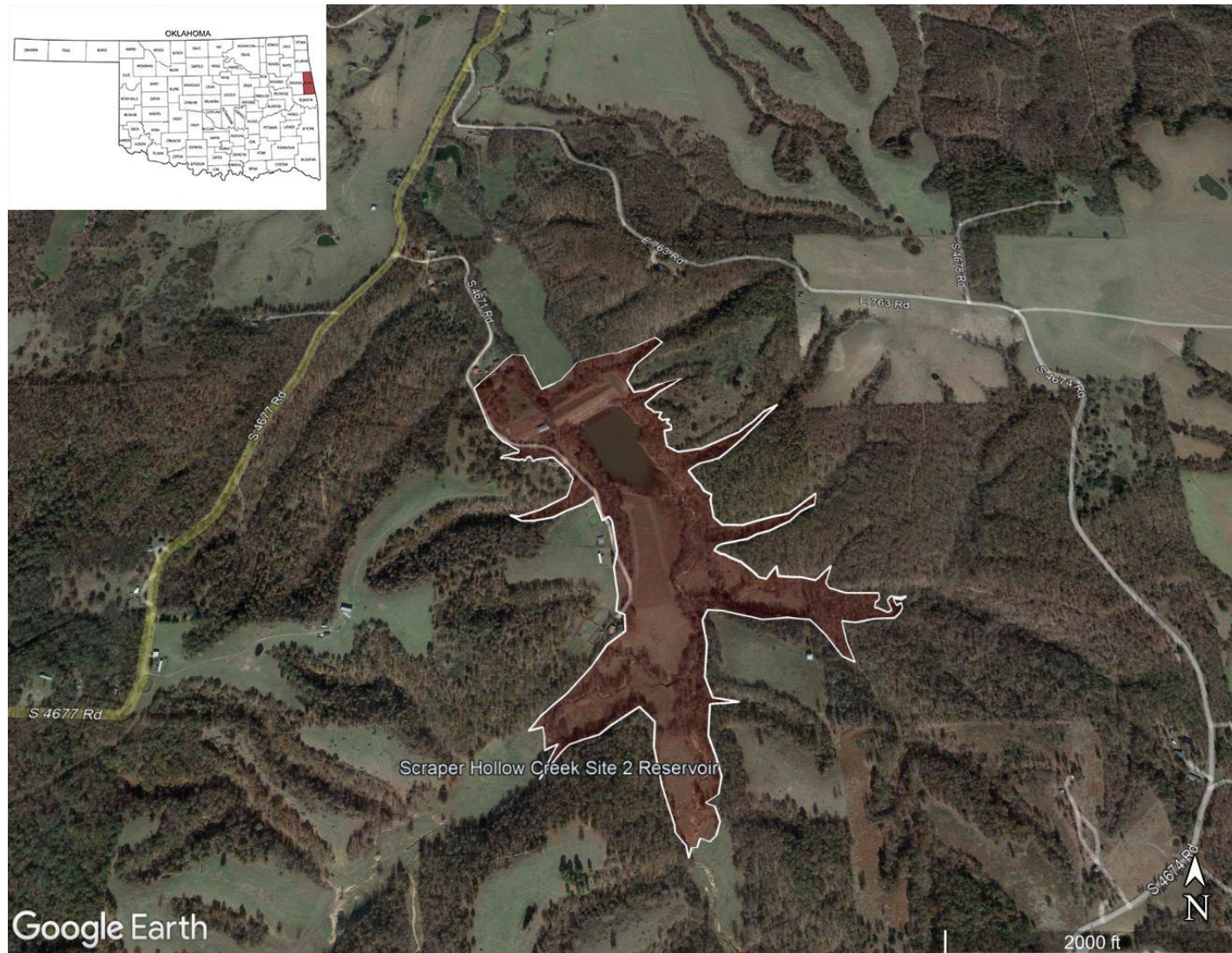
**50%**  
of total population

Adair County, OK

**53%**  
of total population  
Stilwell, OK

Sources: US Census Bureau ACS 5-year 2017-2021

# Scraper Hollow Dam Site 2



Natural Resources Conservation Service

[nrcs.usda.gov](http://nrcs.usda.gov)

# Existing Conditions

- **Scraper Hollow Site 2 dam is 54 years old (built in 1969)**
- **Built for flood control**
- **Built as low hazard, currently classified as high hazard (2005)**
- **Anticipated improvements are related to:**
  - Meeting NRCS and State Dam Safety standards for a high hazard dam
  - Relieving a dam safety concern – failure (breach) could result in flooding of 8 houses, 1 mobile home, 1 church, and County Road N4670



# Existing Conditions

- **Scraper Hollow Flood Retarding Structure No. 2**
  - 50-feet high
  - High (Class C) hazard classification
  - Drainage area 1,254 acres (1.96 square miles)
  - Primary and Auxiliary Spillways



# Existing Conditions



Primary reservoir



Open field north of dam site



Natural Resources Conservation Service

# Existing Conditions



Principal intake structure



Outfall pipe and plunge pool below dam



Natural Resources Conservation Service

[nrcs.usda.gov](http://nrcs.usda.gov)

# Existing Conditions



Auxiliary spillway



Drainage channel northwest side of dam



Natural Resources Conservation Service

[nrcs.usda.gov](http://nrcs.usda.gov)

# Existing Conditions



Upstream slope of dam



Downstream slope of dam



Natural Resources Conservation Service

[nrcs.usda.gov](http://nrcs.usda.gov)

# Existing Conditions



Stream area flowing from the south into the reservoir



Natural Resources Conservation Service

[nrcs.usda.gov](http://nrcs.usda.gov)

# Previous Investigations

- **Dam Inspection Reports**
  - Conducted annually in Winter 2018 – 2022
- **Rehabilitation Assessment Report (Oct 2010)**
- **Original Watershed Work Plan (1957)**



Natural  
Resources  
Conservation  
Service

[nrcs.usda.gov](http://nrcs.usda.gov)

# Potential Options to Explore

- **Non-structural improvements**
  - No Federal Action – District funds improvements
  - Decommission dams
  - Implement Best Management Practices (BMPs)
- **Structural improvements**
  - Two alternatives previously evaluated in 2010 assessment
  - Raise principal spillway inlet, raise top of dam, raise and widen auxiliary spillway



Natural  
Resources  
Conservation  
Service

[nrcs.usda.gov](http://nrcs.usda.gov)

# Your Input is Important

What does the **Scraper Hollow Dam Site 2** mean to you?

What kind of impact should dam rehabilitation have on:

- Local agriculture?
- Nearby properties?
- Natural and community resources?
- Safety?

What are the potential benefits of the dam rehabilitation project?

What other comments, questions, or concerns do you have?



Natural  
Resources  
Conservation  
Service

[nrcs.usda.gov](http://nrcs.usda.gov)

# How You Can Comment (by Oct. 26, 2023)

## Talk with staff

## Comment in writing

- USDA Service Center / Adair County Conservation District office
  - ATTN: Roderick Dukes
  - 100 USDA, Suite 206, Stillwater, OK 74074

## By law, NRCS will—and must—document and answer all comments



Natural  
Resources  
Conservation  
Service

[nrcs.usda.gov](https://nrcs.usda.gov)

# The Schedule

Timing	Activities
Summer/Fall 2023	<ul style="list-style-type: none"> <li>• Collect and analyze data on existing conditions</li> <li>• Hold a public meeting to gather feedback</li> <li>• Develop the Purpose and Need</li> </ul>
Winter 2024	<ul style="list-style-type: none"> <li>• Develop dam rehabilitation alternatives</li> <li>• Hold a 2<sup>nd</sup> public meeting for comments</li> </ul>
Winter - Summer 2024	<ul style="list-style-type: none"> <li>• Develop a proposed alternative and draft environmental document (Plan-ED)</li> <li>• Make Plan-ED available for public comment</li> </ul>



Natural  
 Resources  
 Conservation  
 Service

[nrcs.usda.gov](https://nrcs.usda.gov)

# Contacts

## Funding for Watershed Planning

Roderick Dukes, USDA-NRCS, Asst State Conservationist

100 USDA, Suite 206  
Stillwater, OK 74074  
405-742-1220

[Roderick.Dukes@usda.gov](mailto:Roderick.Dukes@usda.gov)



Natural  
Resources  
Conservation  
Service

[nrcs.usda.gov](http://nrcs.usda.gov)



# Thank you!

Scraper Hollow Supplemental Watershed Plan-ED for Dam Site 2

Natural  
Resources  
Conservation  
Service

[nrcs.usda.gov](https://nrcs.usda.gov)